

FEBRUARY

2013

Swift Creek Chronicles

Swift Creek Baptist Church
9300 Penny Road
Raleigh, NC 27606
(919) 851-0112
Fax (919) 851-0171
Email:
office@swiftcreekchurch.com
www.swiftcreekchurch.com

Church Staff:

Dr. David Vess, Pastor
Rev. David Beaver, Minister of Music
Mrs. Robin Atkins, Minister of
Children and Youth
Dr. Bill Pruett, Pianist
Mr. Bobby Mills,
Grounds Maintenance
Mrs. Sandy Jones, Custodian
Mrs. Kim Sharp, Church Secretary
Mrs. Susan Moore, Financial Secretary

Church Office Hours:

Monday -- Friday - 9 a.m.-1p.m.

Sunday Schedule:

Coffee Fellowship—9:30 a.m.
Bible Study—9:45 a.m.
Worship Service—11:00 a.m.

Wednesday Schedule:

Fellowship Meal—5:30 p.m.
Prayer and Bible Study—6:30 p.m.
Children on Mission—6:30 p.m.
Adult Choir Rehearsal—7:15 p.m.

Monthly Events:

1st Sunday—Men's Breakfast
1st and 3rd Sunday – Youth
2nd Friday - PNO
3rd Thursday - WOM
4th Tuesday—C.A.R.E. Ministry

FROM THE PASTOR...

A happy couple was gazing out over the vast and beautiful river. It was a romantic and peaceful moment until they heard the pounding of footsteps behind them. They turned to see a man running down the hill behind them. The man ran out onto the dock and with all his might, he threw himself into the water. The young couple ran up to the dock to see if he was alright.

"Oh, I'm fine," the dripping man said. "An old fellow bet me a million to one that I couldn't jump across the river. Those odds are just too good to ignore; I had to at least try it."

While we can appreciate this young man's "try", there are some things that are not worth our time. However, there are other goals which are truly worth our best effort. At the Finance Committee meeting the final numbers for 2012 were shared and our Treasurer told us we had accomplished something we had not done in many years, while we did not meet the budget, we did finish with \$6,959 more than what we had spent. Last year that number was \$11 in the positive. I share this to say a word of thanks for your faithfulness and also to let you know that all of the staff, gives our best "try" to keep our spending within the budget.

Those of you who attended worship on January 13, know the title of the sermon was titled "The Top Verse of 2012". Psalm 23:4 was the most searched verse online in 2012. After listening to your comments, I have decided to preach on each of the other five verses of Psalm 23. May God bless us as we gather around this precious passage of scripture to begin our year.

In God's Grace,

David Vess

ROBIN'S ROUNDTABLE

A Valentine from GOD

For God so lo**V**ed the world,
 That he g**A**ve
 His on**L**y Son
 That who**E**ver
 Believes i**N** him
 Should no**T**
 Per**I**sh, but have
 Eter**N**al
 lif**E**.

~John 3:16

God sends this message to you and me each day, the whole year long.
 We need to share His love and this message with someone each day, the whole year long.
 If we focused more on sharing His message each day there wouldn't be a lot of time left in
 the day to think of negative messages.

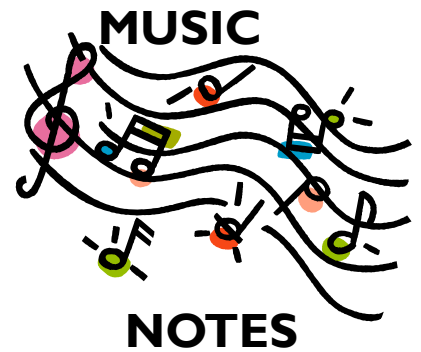
In Christian Love and Service,
 Robin

Deacon Update

At the regular monthly Deacons Meeting in addition to the Family Ministry concerns, the following items were discussed:

- *Guest – Jim Walker, chairman of Construction study committee shared with us that his committee consisting of Charles Norton, Sharon Lawrence and Pat Mills will be meeting soon to discuss what direction they will be recommending to the church for the update and possible addition to the vestibule and portico.
- *Jim walker also said the building committee will be considering refurbishing the tile in the fellowship hall, or replacing with tile or carpet. Prices range from \$2500 to \$5900.
- *Flag pole memorial monument still being researched.
- *Paving Project has been completed.
- *Girl scouts have volunteered to build or furnish wooden benches for playground area
- *MMO program closed due to lack of children.
- *Church conference moved to Feb. 20 so not to interfere with Ash Wednesday service.

We are a month into another year at Swift Creek Baptist Church and the music ministry is making preparations for Palm Sunday (Mar. 24), Maundy Thursday (Mar. 28) and Easter Sunday (Mar. 31). As always, I invite all who enjoys good fellowship through singing/ringing the praises of God, to join us each Wednesday night. The handbell choir rehearses at 6:15 and the adult choir rehearses at 7:15. "The more, the merrier" certainly applies to these ministries, so consider this as your New Year's resolution and join the fun!



A couple of anthems the choir is learning come from a collection titled, "The Top Twelve," aptly named, for these songs have found a place in the hearts of worshippers over the past two decades. One of the twelve songs, "Your Grace Still Amazes Me" is a powerful affirmation of God's faithfulness, mercy and love just to mention a few of the attributes of our Heavenly Father. The song ask the questions:

"What can I give You, what can I say?
I know there's no way to repay You,
Only to offer You my praise!"

The chorus then demonstrates why it is great to be a Christian, joining our hearts, minds, and voices together each day and corporately each week to offer God the praise He is due through Jesus Christ His Son.
HIS GRACE STILL AMAZES ME!

~David

From the Finance Committee

While the formal part of our "Giving to Grow" building fund campaign ended December 31, 2012 our goal to build a Family Life Center lives on. In the future there will be another fund raising campaign. In the mean time, funds directed to the construction building fund are solicited and will be greatly appreciated.

Fellowship Coffee Schedule 2012

January	Journeymen
February	Shepherd's Flock
March	Busy Bees
April	Disciples
May	Journeymen
June	Shepherd's Flock
July	Busy Bees
August	Disciples
September	Journeymen
October	Shepherd's Flock
November	Busy bees
December	Disciples

COMMITMENTS		12-31-2012
Gifts & Contributions		\$203,011.00
Pledges		\$256,770.00
Total Committed		\$459,781.00
RECEIPTS		
Gifts & Contributions Received		\$202,506.00
Pledges Received		\$157,308.00
Total Receipts		\$359,814.00

Swift Creek Baptist Church
9300 Penny Road
Raleigh, NC 27606



February 13

EYE Average Attendance and Giving Dec. 16, 2012—January 13, 2013	
Bible Study Attendance	47
Worship Service	83
Tithes and offerings	\$3,869
Needed weekly to meet budget	\$4,434
Thank you for your gifts!	

NURSERY WORKERS FOR FEBRUARY	
11:00 Service	
3-	Janet Yunker, Dianne Davis
10-	Christian Leggett, JoAnne King
17-	Sharon Lawrence, Lorraine Norton
24-	Pearl Strickland, Sandra Cox

The C.A.R.E. Ministry

Care Ministry will meet on Tuesday, February 26th at 10 a.m. Many have been blessed with our calls, visits, cards and prayers. Thank you for your dedication to this important part of Swift Creek's outreach program.

Online Giving

Available at www.swiftcreekchurch.com
 You can now make secure donations on our website using a credit card, debit card, or Paypal account. This feature allows you to make contributions from anywhere internet access is available.

Swift Creek Baptist Church Clothes Closet and Food Pantry

AS OF JANUARY 15 WE HAVE FED AND CLOTHED 28 PEOPLE IN NEED THIS YEAR!

Don't forget the food pantry on your next shopping trip. Anything you donate that is store bought is greatly appreciated.